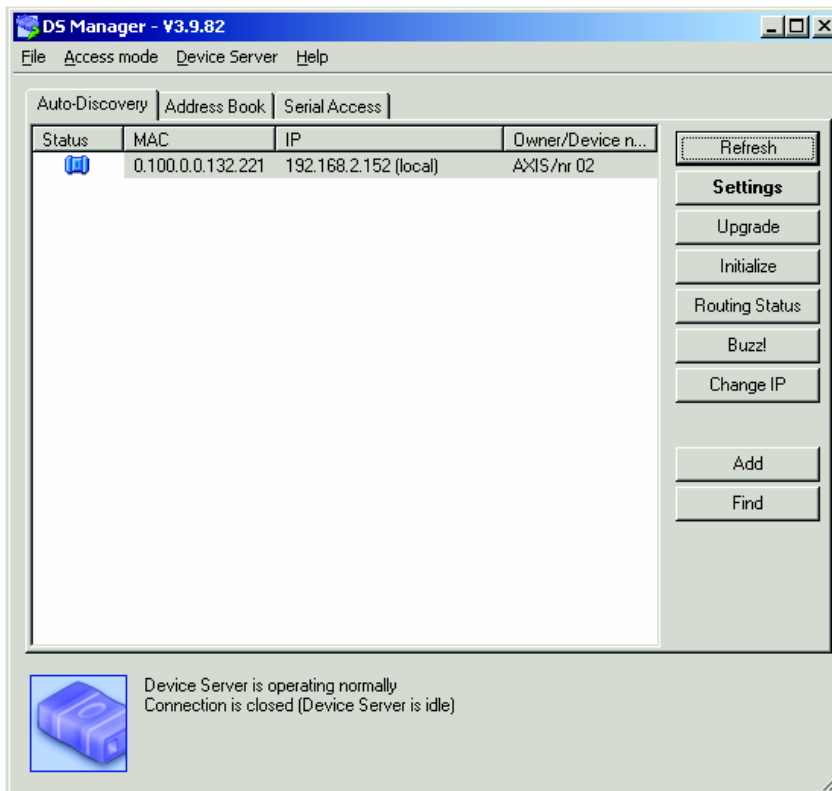


## Configuration of ethernet module using Tibbo software

To install Tibbo run instalator file TDST\_3-9-82.exe. Depending on Tibbo version the file name can differ.

To configure Ethernet module use DS Manager (part of Tibbo software). After running DS Manager all ethernet modules connected to network are searched and they are displayed in Auto-Discovery window (look picture below).



To change settings choose Ethernet module from the list and click *Settings*. *Settings* window (picture on next side) can differ depending on Tibbo version.

In *Settings* window user can check or change:

- Proper transport protocol: default TCP
- IP address: proper address for used network
- Serial port settings

Confirm set parameters by clicking OK and by confirming restart of modules question.

Settings: DS <V3.32(S)> +N [AXIS]

Network | Connection | Serial port | Outbound packets | All

Owner name	AXIS
Device name	nr 02
MAC-address	0.100.0.0.132.221
DHCP	0- Disabled
IP-address	192.168.2.152
Port	1001
Registration at dDNS Server	0- Disabled
dDNS Server IP-address	(irrelevant)
dDNS Server port	(irrelevant)
Auto-registration on Link Serv	0- Disabled
Gateway IP-address	0.0.0.1
Subnet mask	0.0.0.0

Save Load Password OK Cancel

Settings: DS <V3.32(S)> +N [AXIS]

Network | Connection | Serial port | Outbound packets | All

Connection timeout (min)	5
Transport protocol	1- TCP
Broadcast UDP data	(irrelevant)
Link Service login	0- Disabled
Inband commands	0- Disabled
Data login	0- Disabled
Routing Mode	0- Server (Slave)
Accept connection from	0- Any IP-address
Connection mode	(irrelevant)
Destination IP-address	(irrelevant)
Destination port	(irrelevant)
Notification destination	0- Last port

Save Load Password OK Cancel

Settings: DS <V3.32(S)> +N [AXIS]

Network | Connection | Serial port | Outbound packets | All

Serial interface	2- Automatic
RTS/CTS flow control	0- Disabled or remote
DTR mode	0- Idle or remote
Power-up DTR state	0- LOW
Baud rate	6- 57600 bps
Parity	0- None
Data bits	1- 8 bits
Soft entry into Serial program	0- Disabled
Escape character (ASCII code)	(irrelevant)
On-the-Fly commands	1- Enabled
Password for on-the-Fly con	0- Disabled
Notification bitmask	0

Save Load Password OK Cancel

Settings: DS <V3.32(S)> +N [AXIS]

Network | Connection | Serial port | Outbound packets | All

Max packet length	255
Max intercharacter delay	1
Start on any char	1- Yes
Use start-character	0- No
Start character (ASCII code)	0
Use stop-character	0- No
Stop-character (ASCII code)	0
Number of post-characters	0

Save Load Password OK Cancel